

AQUADEMY LESSON 3: ANIMAL ADAPTATIONS

Animals use parts of their bodies to help them survive. Sometimes things animals do also help them survive. These are called **ADAPTATIONS**.

1

W.O.W

TASK:

Circle the animals **WITHOUT** scales.



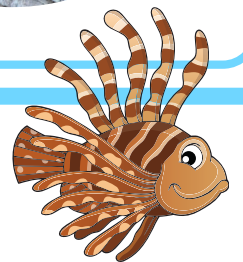
Fish are covered in **SCALES**. Scales help protect their bodies.



2

SHIPWRECK

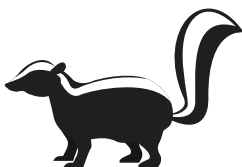
Here we can find a fearsome predator, the Lion Fish.



Watch the Lion Fish, what do you think its adaptations are?

If you guessed it's fins or spines you're correct! This fish uses its spines to protect itself.

TASK: What are other ways animals can protect themselves? Fill in the blank and draw a picture.



Smells



Sounds

3

THE DOME

From nose to tail alligators are specially adapted to live in their environment!

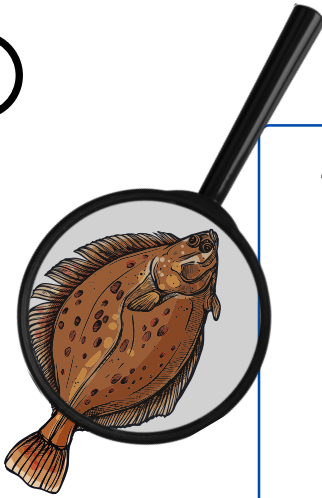
TASK:
Circle the alligator's **EYES**
and **NOSE**.



An alligators' **EYES** and **NOSE** are on **TOP** of their head. This helps them to breathe and see while keeping their body under the water.

4

SHORELINE



This next animal uses **CAMOUFLAGE** as an adaptation. In fact, he's so well camouflaged a lot of people don't even know he's there!

TASK: Can you find the Sand Dab in the Observation Tank?

Ask the Educator for help if you get stumped.

5

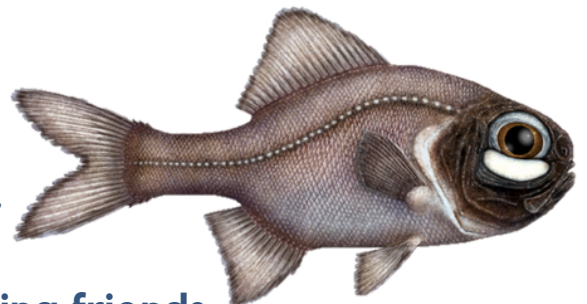
THE CAVE

This next animal's adaptation is so special it glows in the dark!

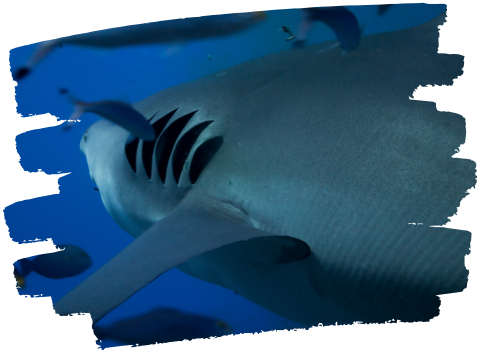
TASK:

- Find the Flashlight Fish in the cave.
- Circle the part of his body that **GLOWS**.
- What do you think it uses its light for?

A. Finding food B. Scaring predators C. Finding friends



6 THE TUNNEL



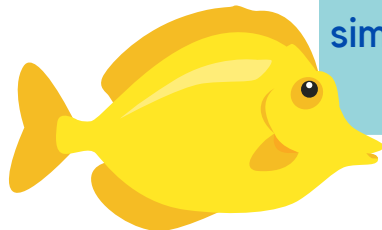
Take a deep breath. What body part do we use to breathe?

We use lungs to breathe air, and fish use **GILLS** to breathe underwater.

TASK: Circle the animals that have **GILLS**.



7 CONTACT COVE



There is a tank on your left hand side as you exit the Shark Tunnel. In here you'll find some fish from a famous Disney movie!

These famous fish belong to a group called Surgeon fish because they have sharp spines at the base of their tail, similar to a surgeon's scalpel, they use for defense.

8 SUBMARINE

In the first port hole on your right are some seahorses. Boy seahorses will hold seahorse eggs in a pouch on their tummies (kind of like a kangaroo pouch). He keeps the eggs safe until they're ready to hatch.



TASK: Take a moment to think about the kinds of things your grown ups do to keep you safe.

Final Test!

Circle the animal's **ADAPTATION**!



You have completed Lesson 3: Animal Adaptations! Bring this packet to the gift shop to check your answers.